



baresque

DUO DESIGN

+507 6491 1805

PANAMA-MEXICO-GUATEMALA-HONDURAS-ECUADOR.

zint®

ACOUSTIC SOLUTIONS

VOLUME 3

duo**Design**
ACUSTIC & SPACE SOLUTIONS





We are excited to present the latest additions to Zintra Acoustic Solutions encompassing four new nature inspired Zintra Sheet colours alongside Wall and Ceiling ideas.

Feel free to reach out to receive a copy of the Zintra Acoustic Solutions, Volume 1 or Zintra Timber and Sticks brochures, or a complete sample box.

We hope you enjoy the new ideas and look forward to helping with your next project.

Contents

Overview	4
Benefits	4
New Colours	6
Ceilings	16
Baffle Systems	18
Clouds	24
Walls	28
3D Wall Panels	30
Box Tiles	34
Plain Tiles	38
Etch Tiles	42
Pattern Tiles	46



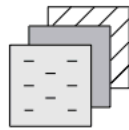
Zintra Benefits

Zintra not only looks good, it reduces noise and doesn't cost the earth. Available in a wide range of colours, and designs, plus the ability to add digital print, Zintra's versatility is that it can be applied directly to walls and ceilings, fabricated into tiles, baffles, and partitions that help solve the unique intricacies of any indoor space.

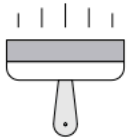
BENEFITS INCLUDE:



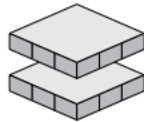
Superior noise reduction



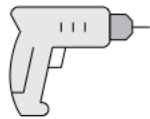
Joint-free application



Easy fabrication



Uniform colour through the panel



Simple installation



Digitally printable

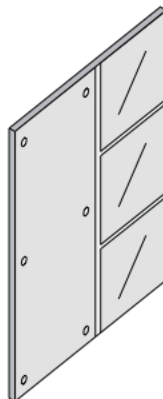
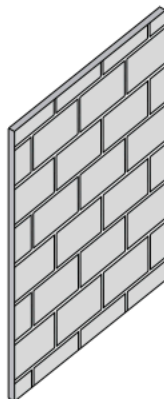
NRC AND ALPHA-W RATINGS:

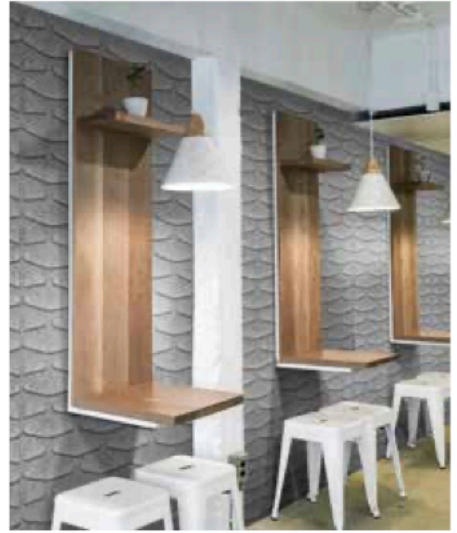


NRC | Aw
Reflects 100% back

0

NRC 0.02	Aw 0.02	NRC 0.05	Aw 0.05
Brick or Concrete wall		Standard Drywall	





NOISE REDUCTION DEPENDING ON PRODUCT CONFIGURATION

NRC 0.45 | Aw 0.3

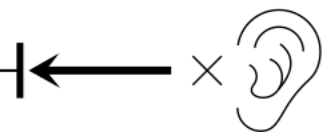
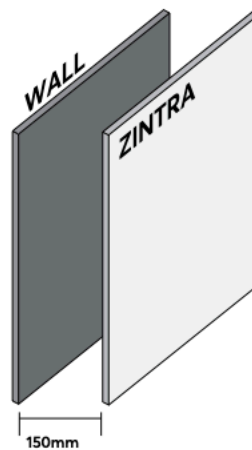
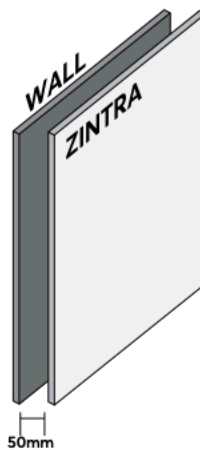
Mounted directly
to wall

NRC 0.8 | Aw 0.75

Mounted 50mm from
wall

NRC 0.9 | Aw 0.95

Mounted 150mm from
wall



NRC | Aw
1 Reflects
0%
back

New Colours

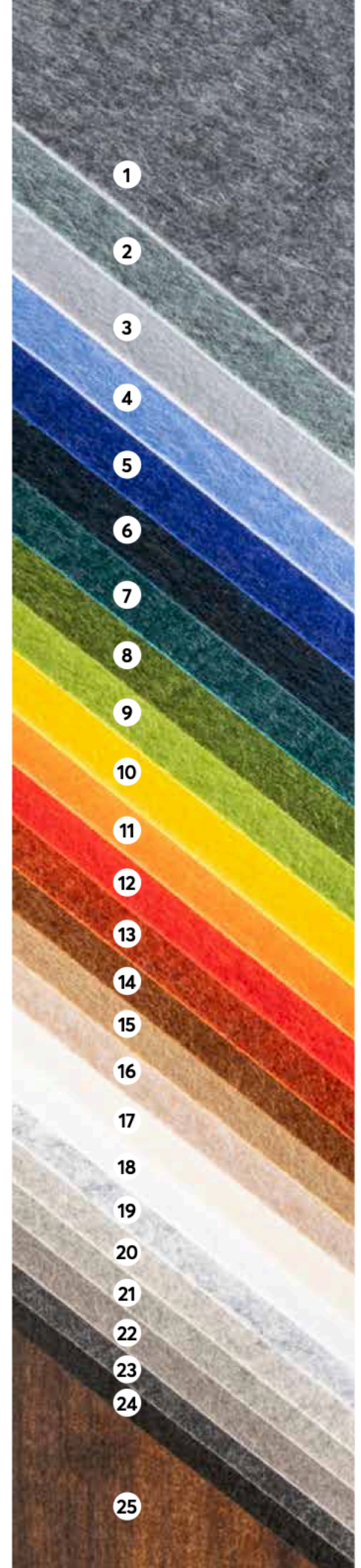
This release sees the addition of 4 new Zintra colours. Drawing inspiration from nature, Brick, Olive, Pebble and Midnight reflect the positivity and adventure of a new world. Each one has been developed with versatility in mind, so they can work alone or with any of the 28 colours and prints in the full Zintra range.

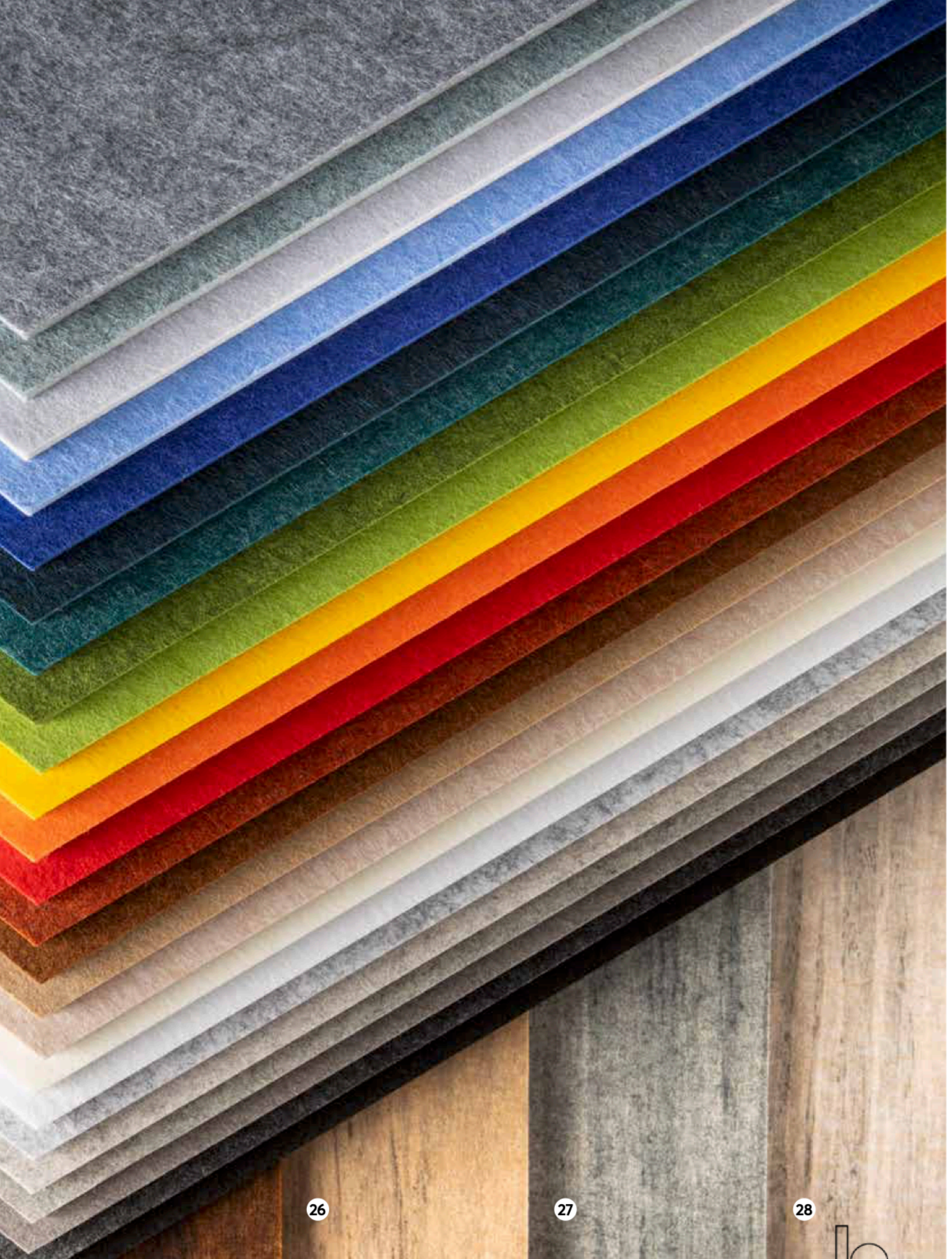
ZINTRA COLOURS (Top to Bottom):

- ① Pewter (PW) ② Cadet (CT) ③ Chambray (CH)
- ④ Sky (SY) ⑤ Cobalt (CB) ⑥ Midnight (MI)
- ⑦ Malachite (MA) ⑧ Olive (OL) ⑨ Grass (GS)
- ⑩ Sunshine (SS) ⑪ Mandarin (MN) ⑫ Ochre (OE)
- ⑬ Brick (BK) ⑭ Bark (MR) ⑮ Ecru (SC) ⑯ Linen (LN)
- ⑰ Ivory (IY) ⑱ Frost (FT) ⑲ Smoke (SE) ⑳ Pebble (PB)
- ㉑ Greige (GR) ㉒ Fossil (FL) ㉓ Slate (SL) ㉔ Tar (TR)

ZINTRA TIMBER (Left to Right):

- ㉕ Merbau (MB) ㉖ Spotted Gum (SP)
- ㉗ Ironbark (IB) ㉘ Eucalyptus (EU)

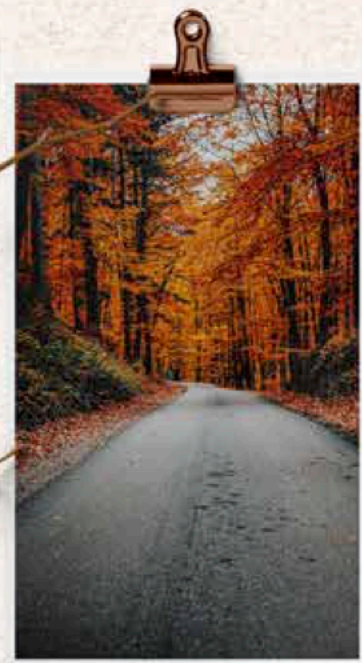




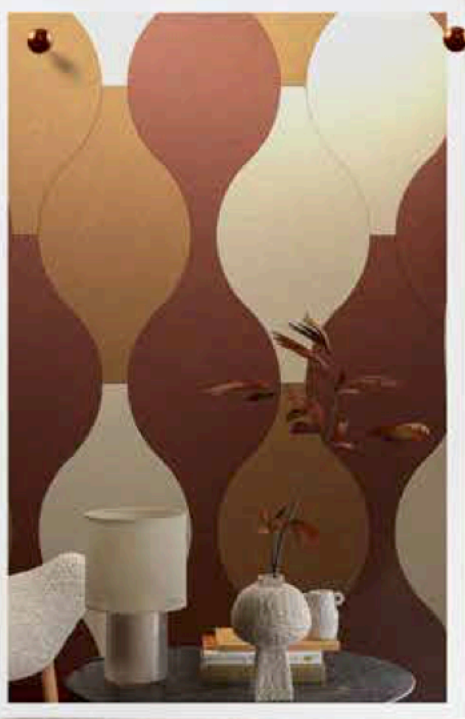


Brick

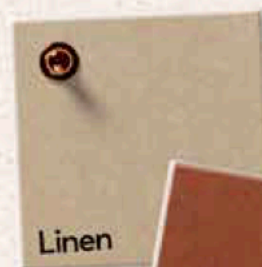
Evoking feelings of warmth and comfort, while imparting tones reminiscent of Autumn, Brick is perfect for pairing with neutral tones or bringing the outdoors in.



*Autumn
Colours*

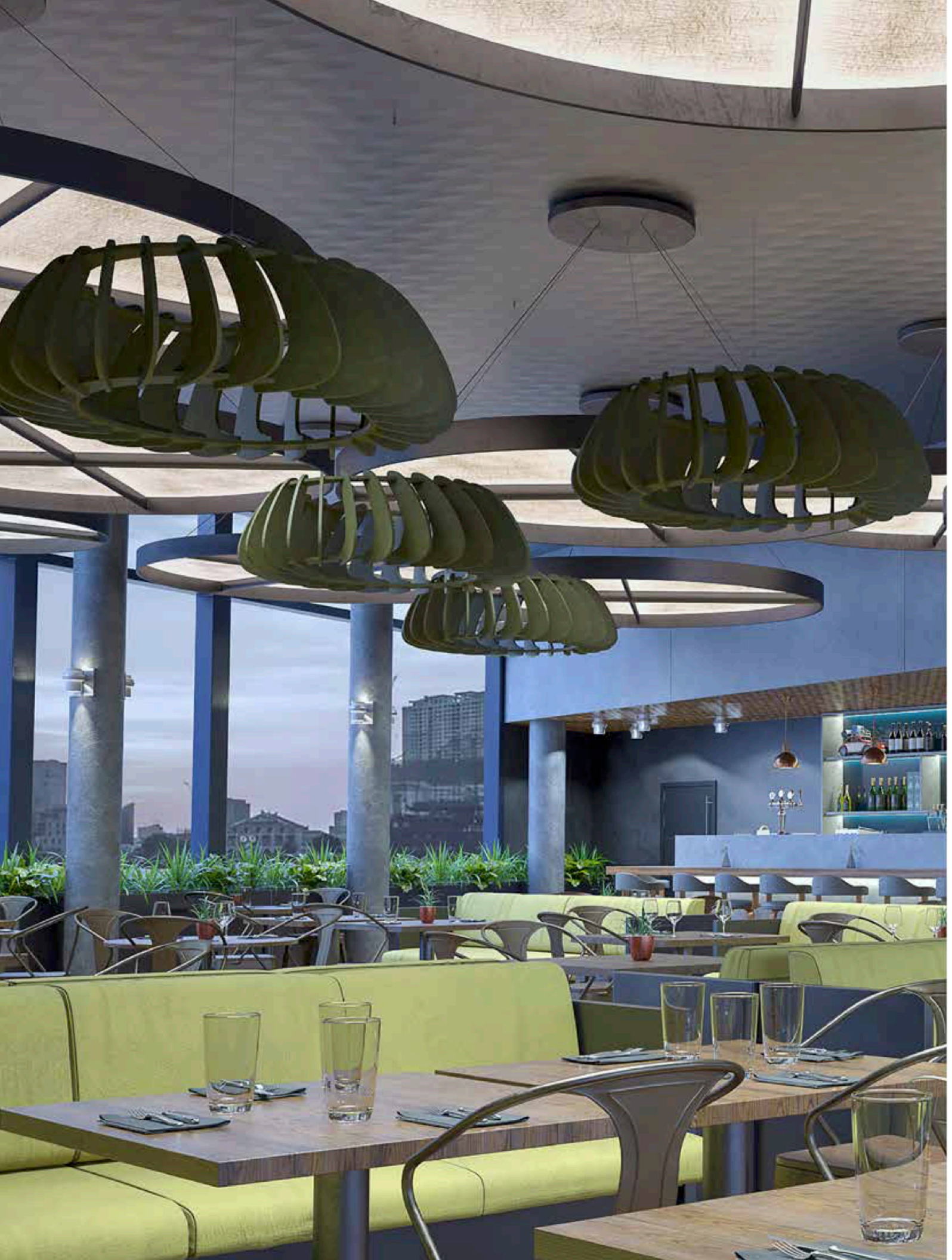


*Pairs back with
Linen and Ecu*



Tiles Hourglass





Olive

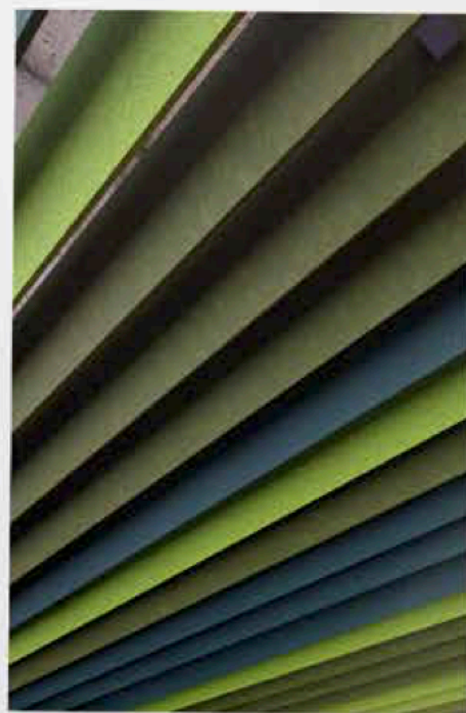
Reminiscent of a Mediterranean grove, Olive brings a darker shade of green with a hint of yellow. It gives a sense of peace and harmony, while conveying openness and space.



The Grove



*Pairs back with
Grass and
Malachite*



Baffle Systems Louvre





Pebble

Inspired by the colour of water flowing over rocks, this warm, light grey adds neutrality and calmness to the range. Pebble is perfect as part of a modern colour palette.





Midnight

Projecting confidence and mystery, Midnight's dark shade means it can be treated as a neutral colour, while its blue hue exudes an elegant, contemporary feel.



Ocean Inspo



*Pairs back with
Cadet and Sky*



Wall Panel Angled

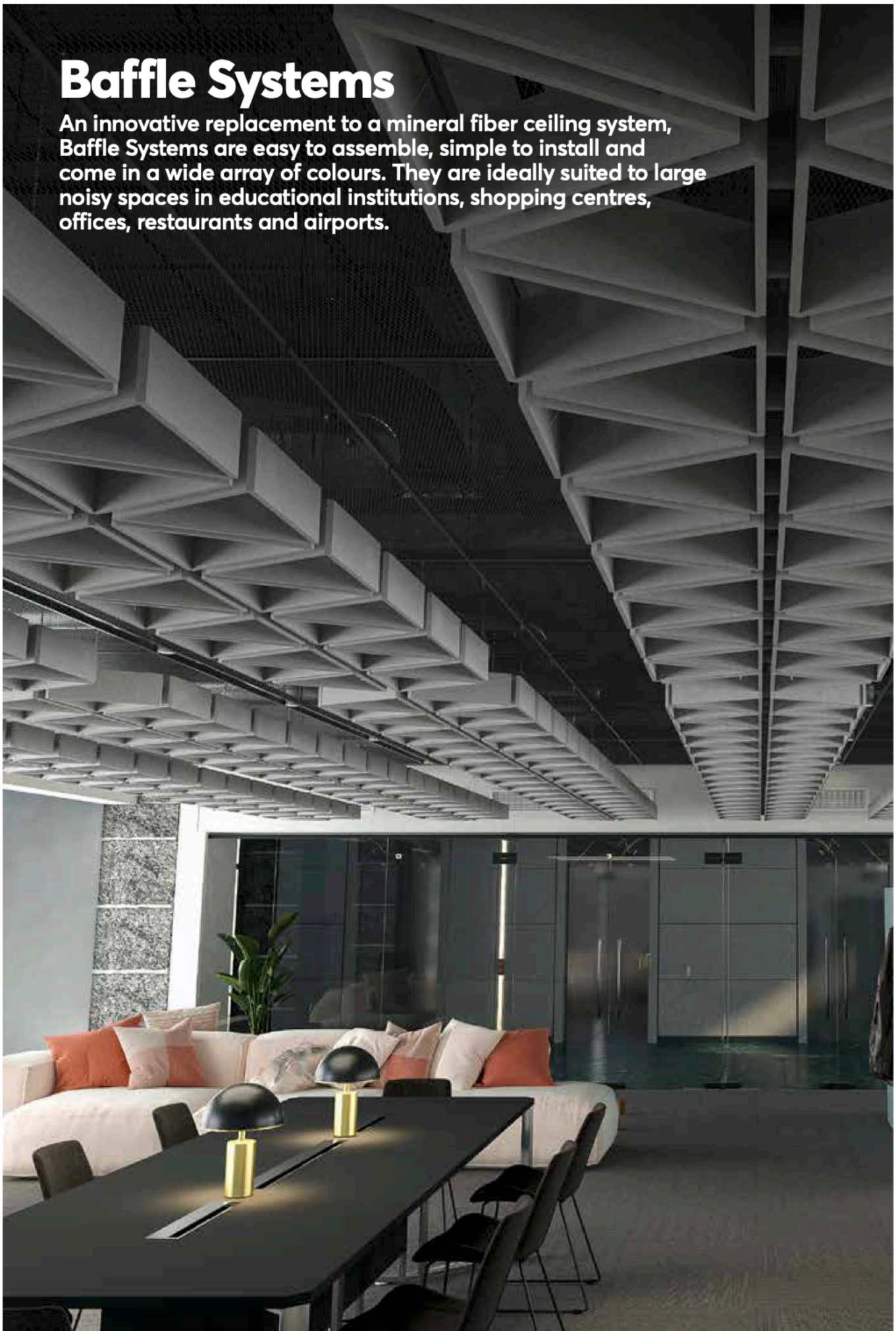


A photograph of a modern interior space, likely a gym or wellness center. The ceiling is the focal point, featuring a series of parallel, slatted panels in alternating shades of teal, olive green, and grey. A track lighting system with several adjustable spotlights is mounted on the left side of the ceiling. Below the ceiling, a wooden pillar supports a structure with a slatted wall. In the background, a large window or glass wall reveals an outdoor area with lush green plants and a wooden fence. In the foreground, the metallic frames of gym equipment are visible.

Ceilings

Baffle Systems

An innovative replacement to a mineral fiber ceiling system, Baffle Systems are easy to assemble, simple to install and come in a wide array of colours. They are ideally suited to large noisy spaces in educational institutions, shopping centres, offices, restaurants and airports.



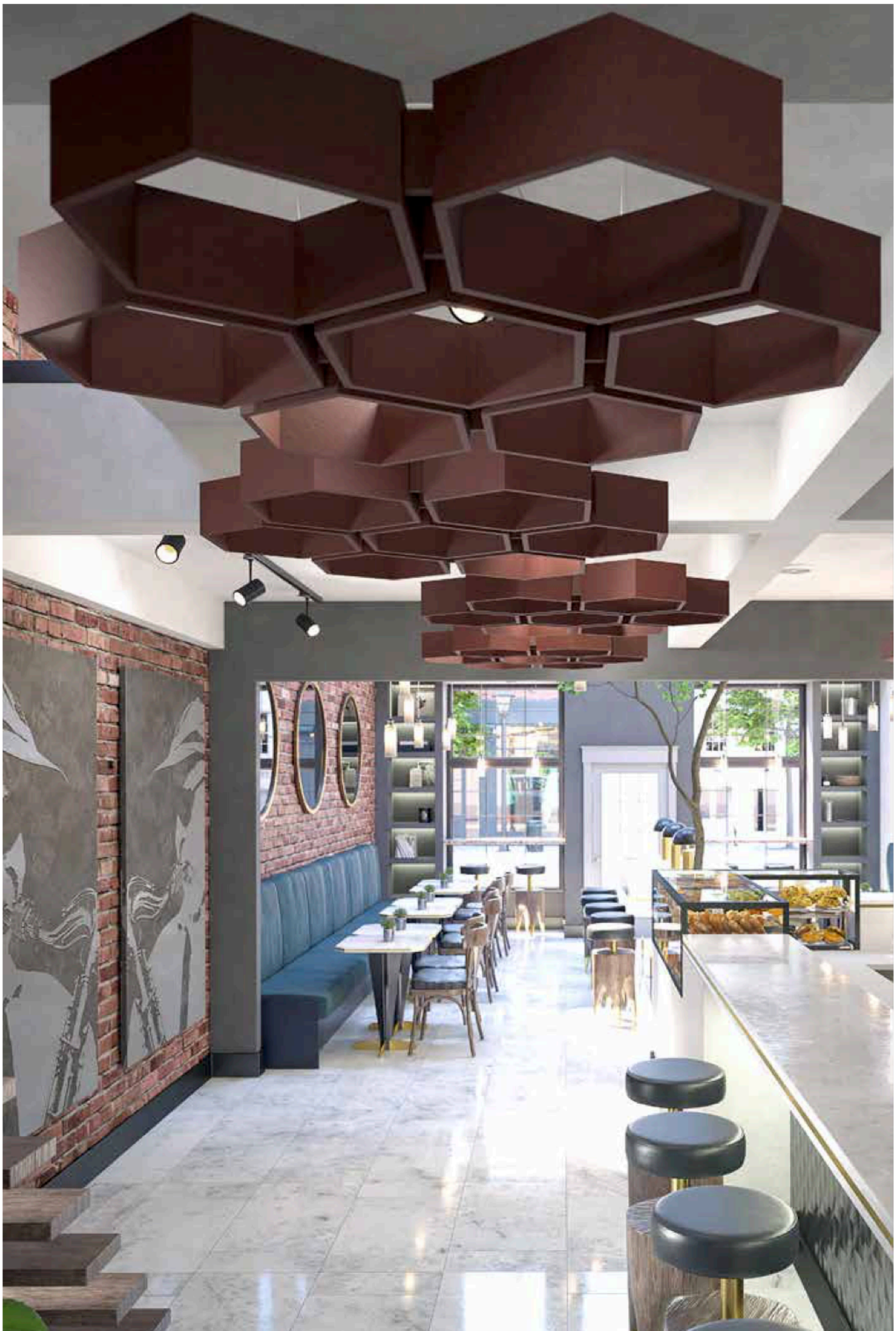


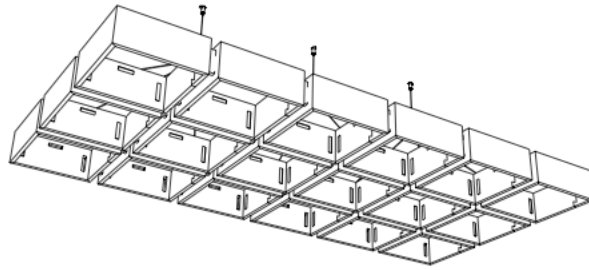
Zintra Baffle Systems | Louvre in Grass, Olive and Malachite

BAFFLE SYSTEMS SPECIFICATIONS

Dimensions:	See page 21 and 23
	Adjustable Cable Kit North America / Asia – 1524mm Europe – 2000mm
Colours:	Available in all 28 colours including Timber (See page 6-7)
Finishes:	Square Tube 25mm x 25mm, Black or Satin Aluminium
NRC Rating:	0.90 (See pages 4-5)
Aw Rating:	0.95 (See pages 4-5)
Notes:	Adjustable Cable Kit included Hang from ceiling grid with optional Twist Clip – Threaded Multi-colour and digital print available

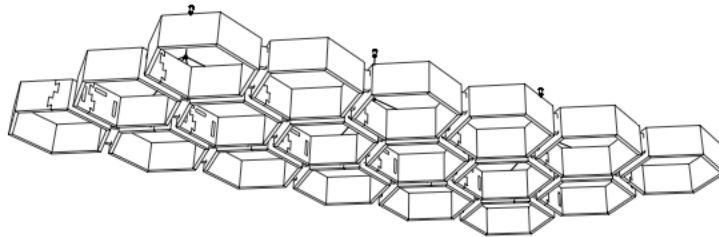






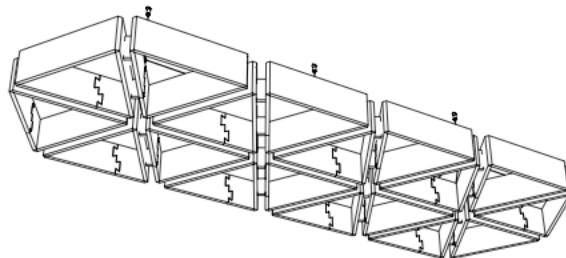
Connect Cubix

18 cubes / set, 1.8m²
930W x 1889D x 120mm H



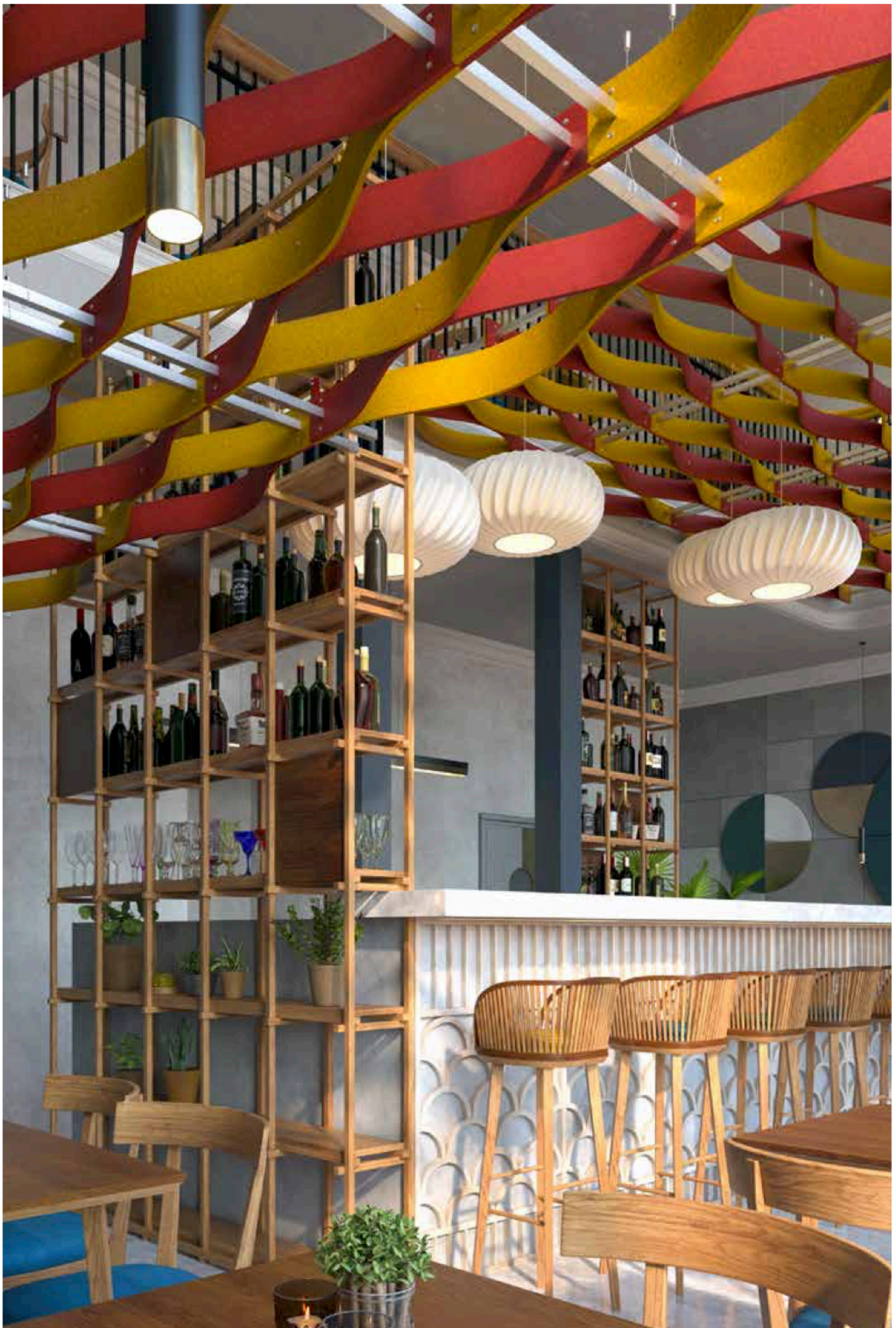
Connect Hive

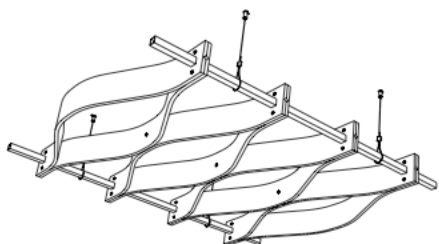
18 hexagons / set, 2.6m²
1027W x 2544D x 120mm H



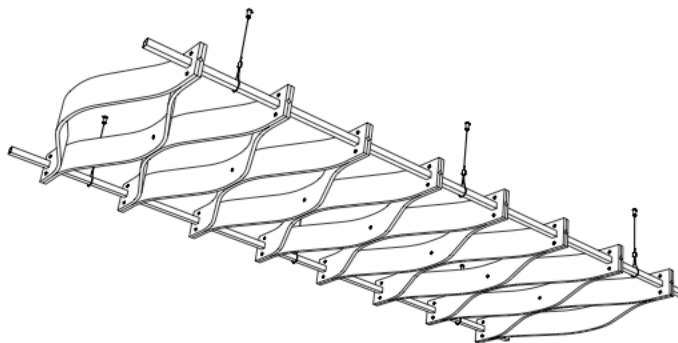
Connect Prismatic

18 triangles / set, 1.7m²
768W x 2241D x 120mm H



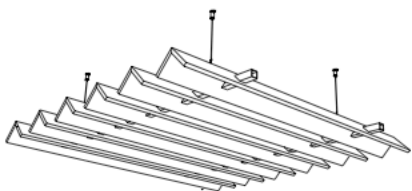


1220W x 1373D x 120mm H

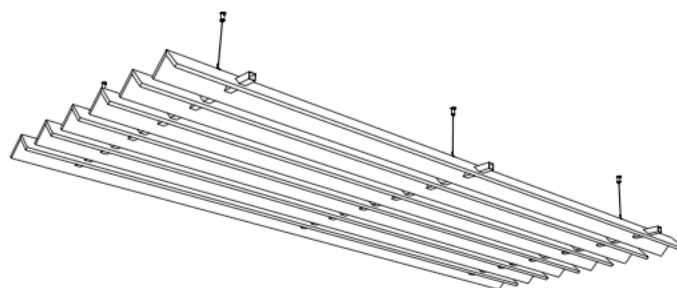


1220W x 2745D x 120mm H

Waves

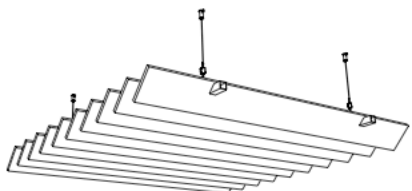


1220W x 1220D x 80mm H

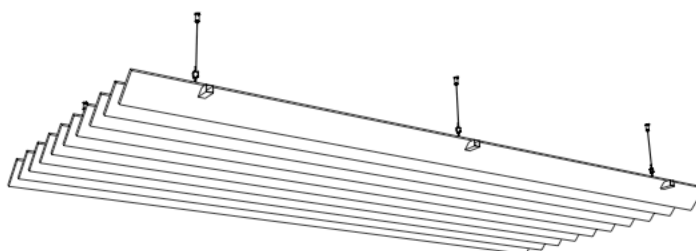


1220W x 2745D x 80mm H

V-Fold



1220W x 1220D x 94mm H



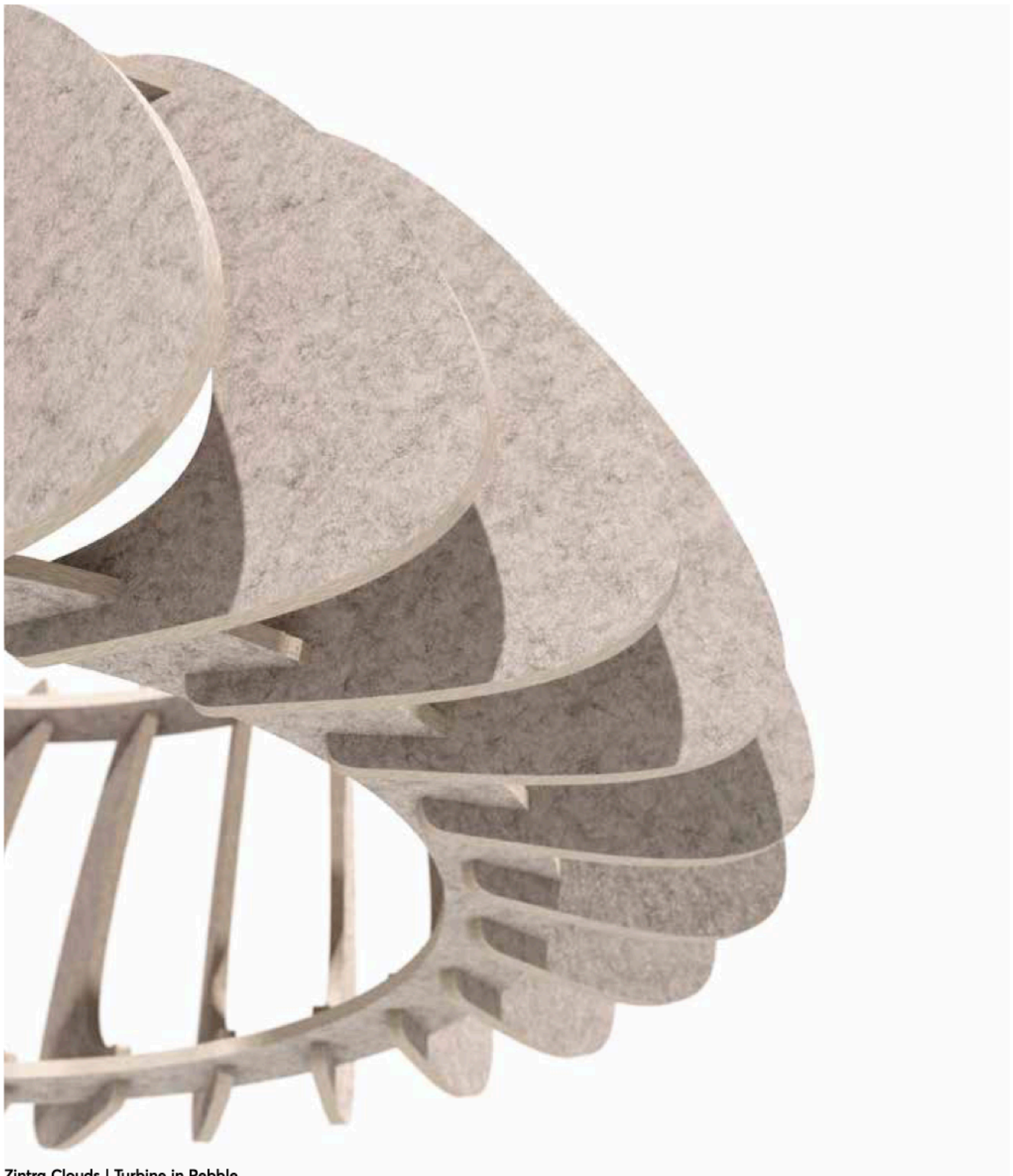
1220W x 2745D x 94mm H

Louvre

Clouds

The combination of straight edges and rounded curves in a 3 dimensional design, ensure Clouds are an attention grabbing addition to a space. Each one easily pressure fits together and hangs quickly to deliver an instant impact.



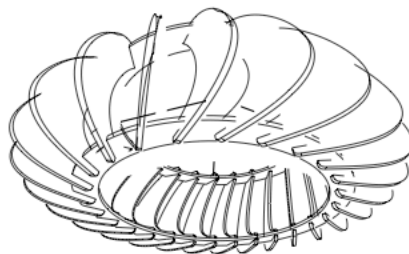


Zintra Clouds | Turbine in Pebble

CLOUDS SPECIFICATIONS

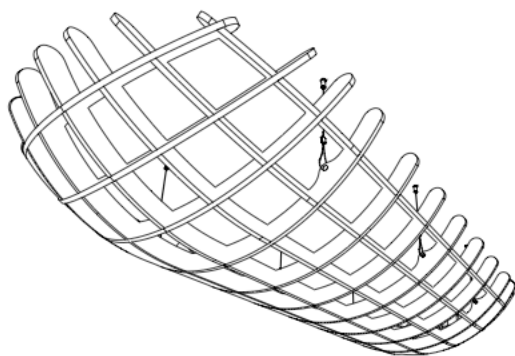
Dimensions:	See page 26
Colours:	Available in all 28 colours including Timber (See page 6-7)
Finishes:	Adjustable Cable Kit – Silver
NRC Rating:	0.90 (See pages 4-5)
Aw Rating:	0.95 (See pages 4-5)
Notes:	Adjustable Cable Kits included Hang from ceiling grid with optional Twist Clip – Threaded Multi-colour available





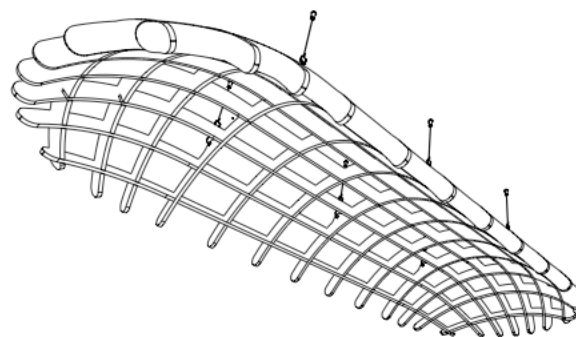
Turbine

1083W x 1083D x 393mm H



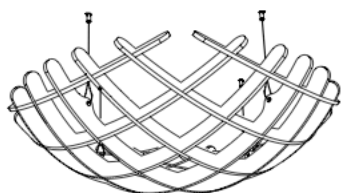
Long Dome Convex

107W x 2476D x 300mm H



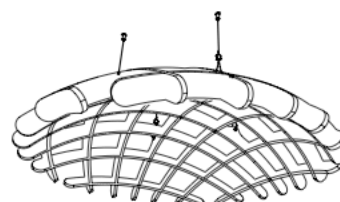
Long Dome Concave

1077W x 2476D x 300mm H



Dome Convex

1133W x 1133D x 300mm H



Dome Concave

1133W x 1133D x 300mm H



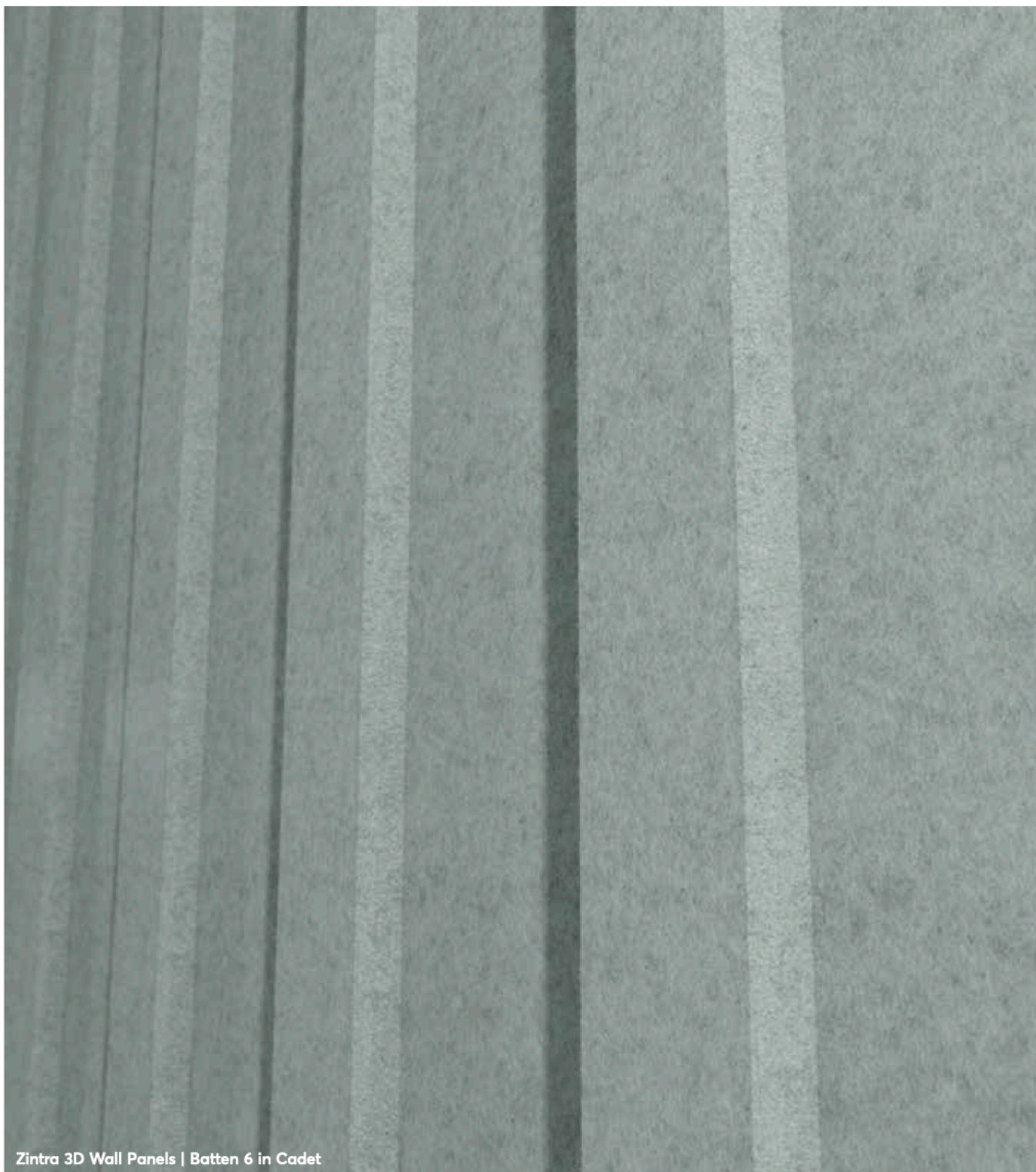
Walls



3D Wall Panels

Seamlessly joined 3D Wall Panels offer an interesting and functional acoustic element to straight or curved walls. Adding depth and design to flat surfaces which absorb sound and cancel out soundwaves. Panels are narrow with a small pattern repeat which means they can be easily adjusted to fit wall to wall without custom drawings.



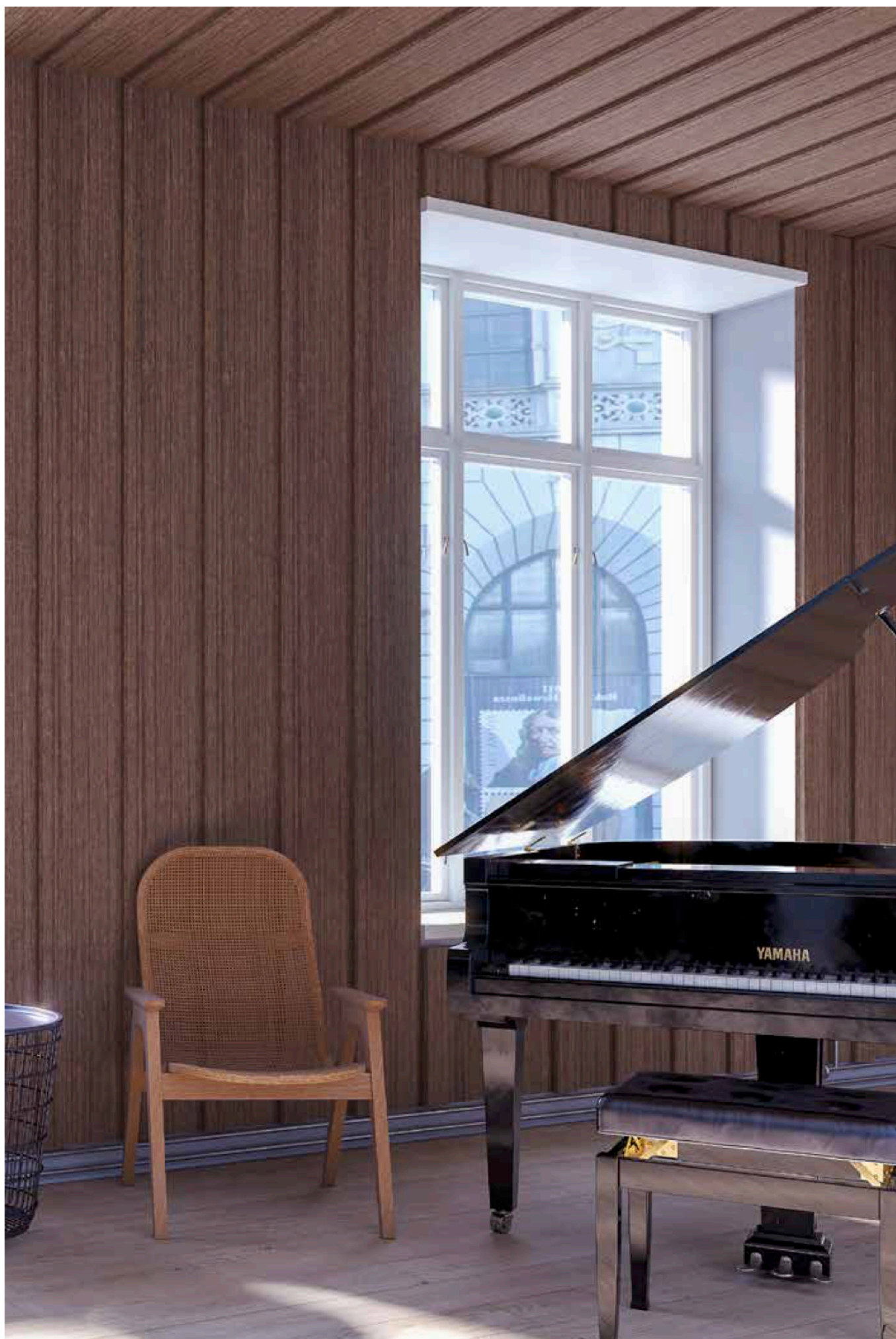


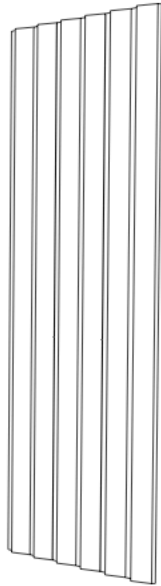
Zintra 3D Wall Panels | Batten 6 in Cadet

3D WALL PANELS SPECIFICATIONS

Dimensions:	See page 33
Colours:	Available in all 28 colours including Timber (See page 6-7)
NRC Rating:	0.45 (See pages 4-5)
Aw Rating:	0.30 (See pages 4-5)
Installation:	Refer to install guide for screw locations and spacing (screws not included). Screw into wall through indicated joins using suitable screws for substrate. Push panel to protrude texture and screw in place. Repeat in a tile like fashion across space.
Notes:	Use Battens 2, 4 and 6 in combination with each other for even more visual effects. Custom sizes available.

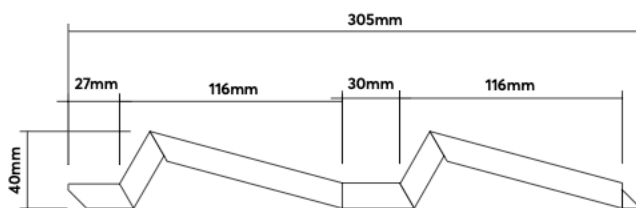






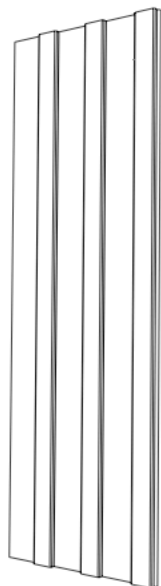
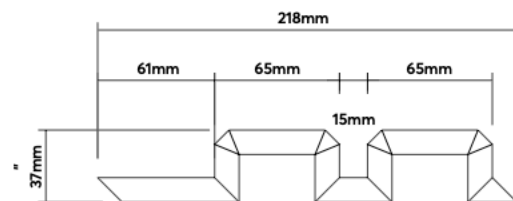
Peaks

3 strips / set, 2.4m²
305W x 2745H x 40mm D / strip



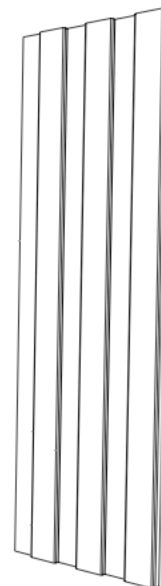
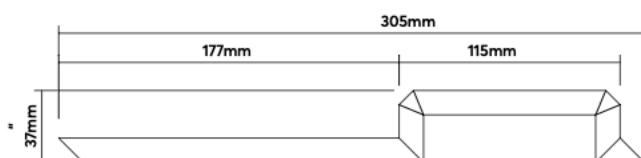
Batten 2

3 strips / set, 1.7m²
218W x 2745H x 37mm D / strip



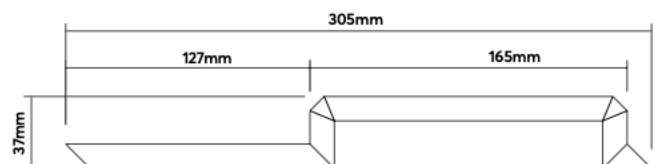
Batten 4

3 strips / set, 2.5m²
305W x 2745H x 37mm D / strip



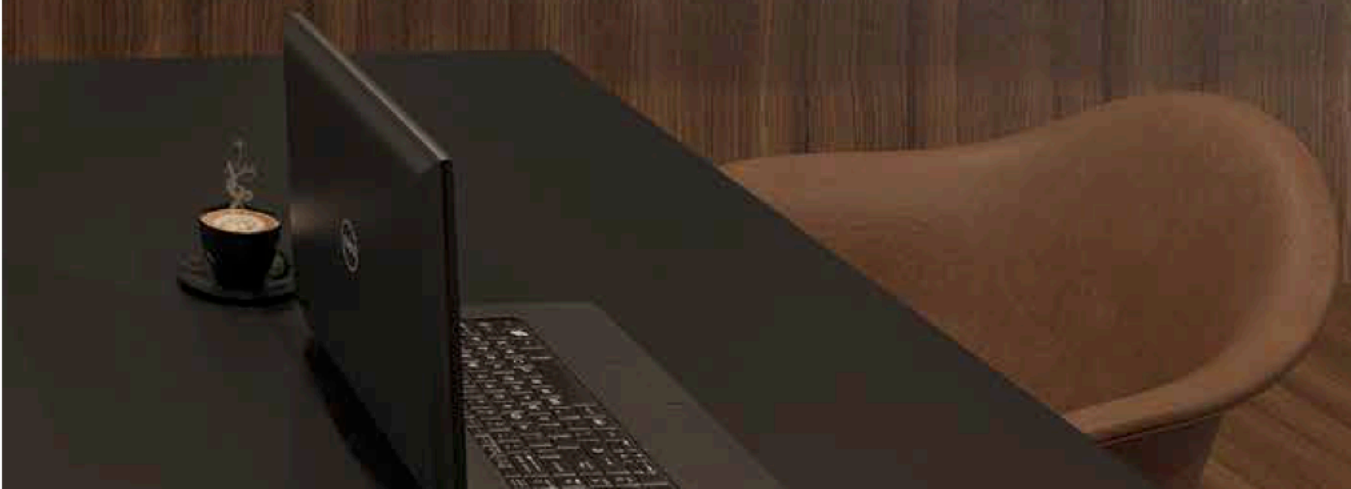
Batten 6

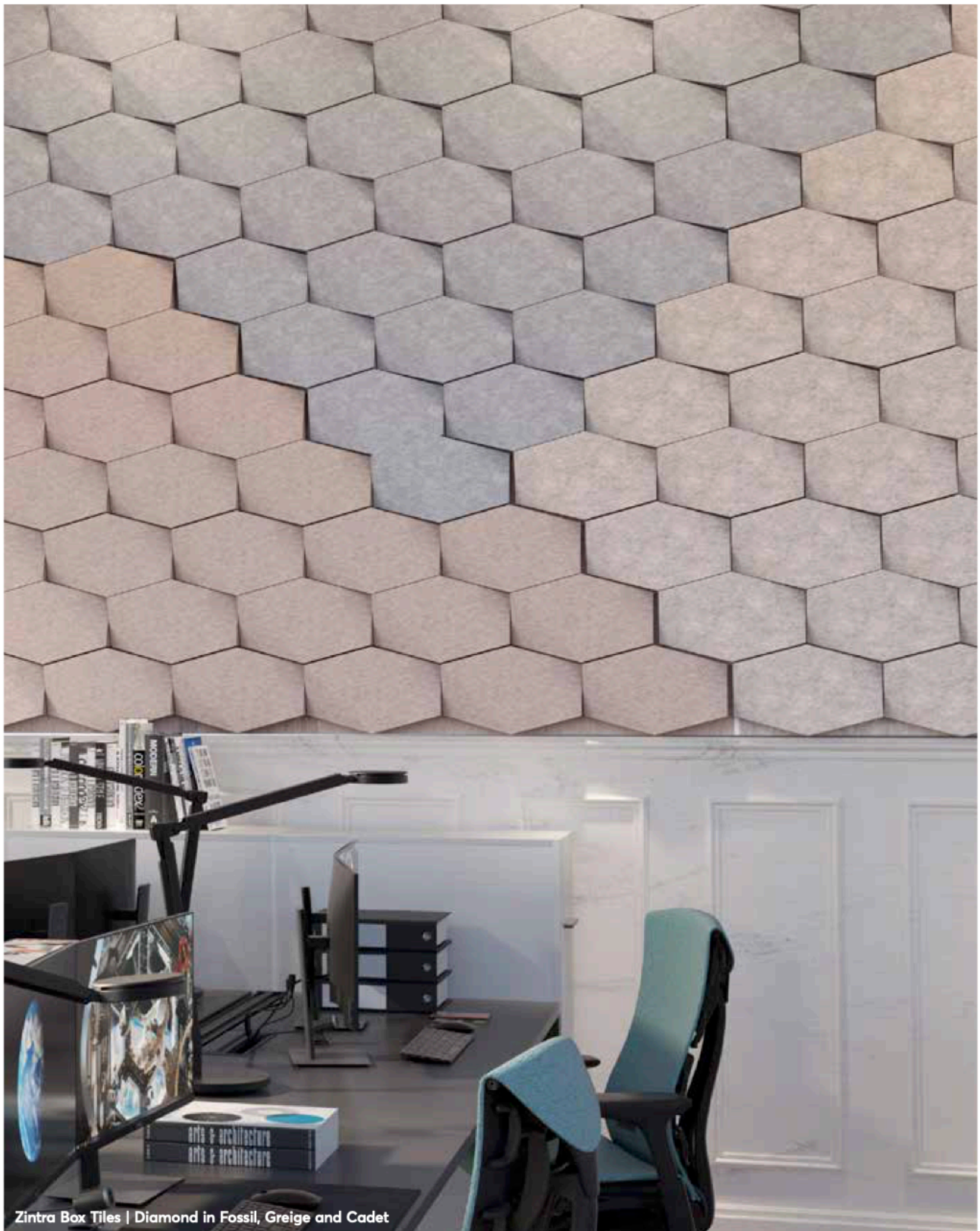
3 strips / set, 2.5m²
305W x 2745H x 37mm D / strip



Box Tiles

With a range of standard sizes and depths, Box Tiles give your walls dimension, colour and the acoustic benefits of Zintra. Easy to layout, mix and match, and install, their versatility is an effective addition to any wall.

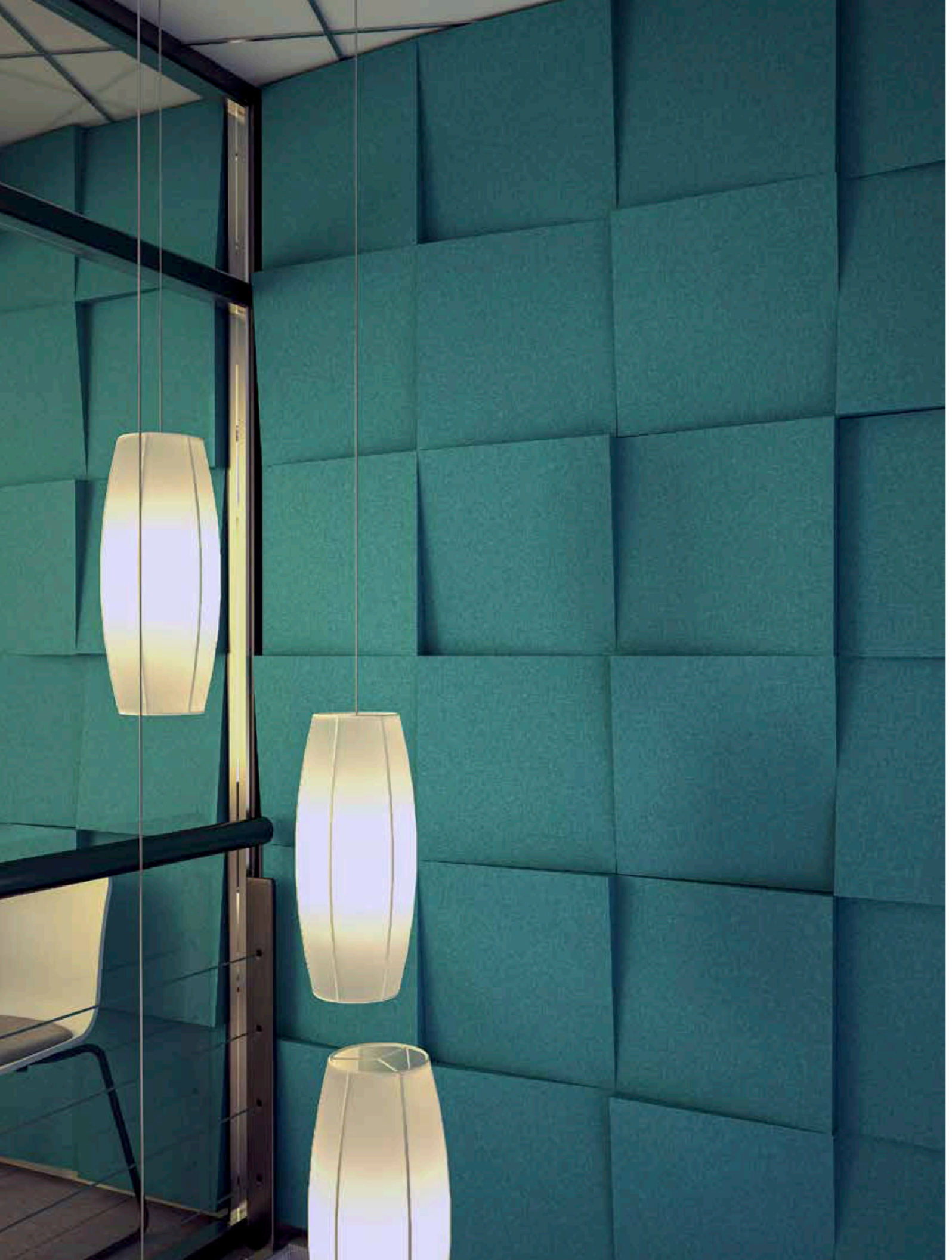


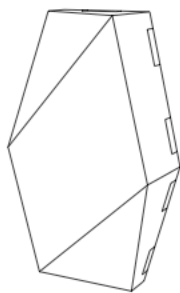


Zintra Box Tiles | Diamond in Fossil, Greige and Cadet

BOX TILES SPECIFICATIONS

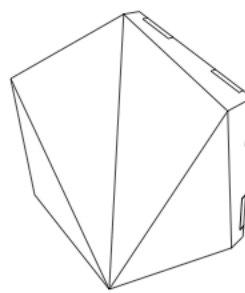
Dimensions:	See page 36
Colours:	Available in all 28 colours including Timber (See page 6-7)
NRC Rating:	0.45 – 0.80 (See pages 4-5)
Aw Rating:	0.30 – 0.75 (See pages 4-5)
Notes:	Custom sizes available





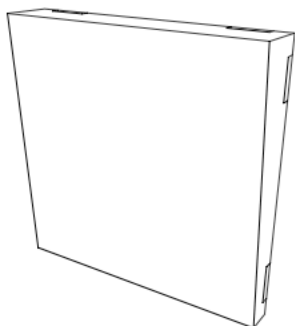
Diamond

15 tiles / set, 1.1m²
242W x 381H x 76mm D / tile



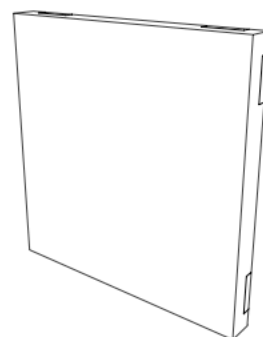
Hex

12 tiles / set, 1.1m²
381W x 330H x 76mm D / tile



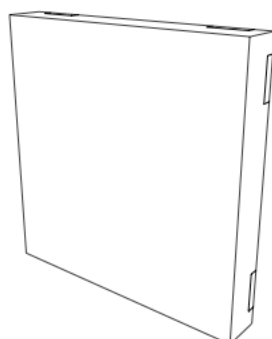
Pitched

10 tiles / set, 1.4m²
381W x 381H x 76mm D / tile



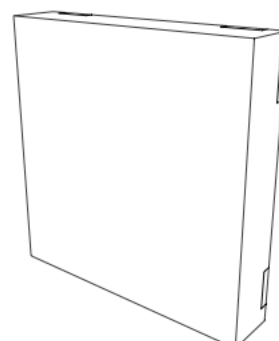
Square 38mm

12 tiles / set, 1.7m²
381W x 381H x 38mm D / tile



Square 57mm

10 tiles / set, 1.4 m²
381W x 381H x 57mm D / tile

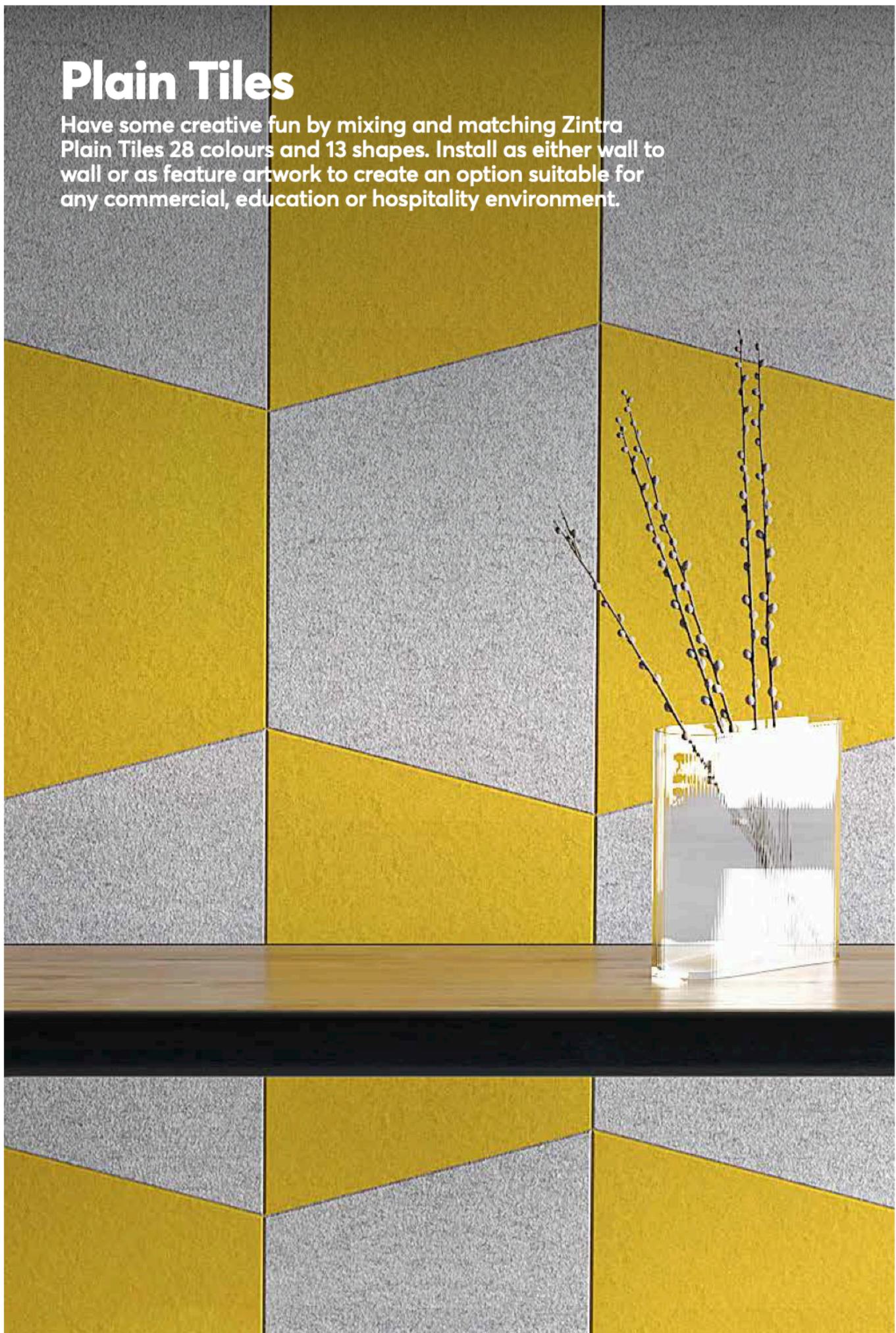


Square 76mm

10 tiles / set, 1.4m²
381W x 381H x 76mm D / tile

Plain Tiles

Have some creative fun by mixing and matching Zintra Plain Tiles 28 colours and 13 shapes. Install as either wall to wall or as feature artwork to create an option suitable for any commercial, education or hospitality environment.





Zintra Plain Tiles | Battleaxe in Spotted Gum

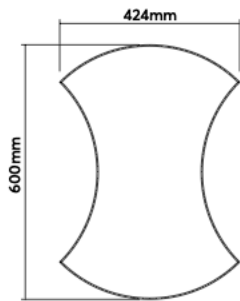
PLAIN TILES SPECIFICATIONS

Dimensions:	See pages 40-41
Thickness:	12mm
Colours:	Available in all 28 colours including Timber (See page 6-7)
NRC Rating:	0.45 (See pages 4-5)
Aw Rating:	0.30 (See pages 4-5)
Notes:	Custom sizes available Designed to coordinate with Etch Tiles available in the full Zintra Range

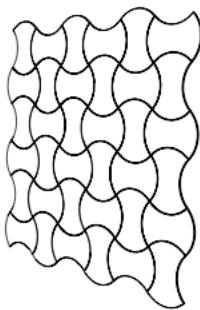


BATTLEAXE

13 tiles / set, 2.3m²



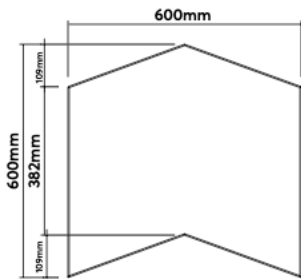
Front View



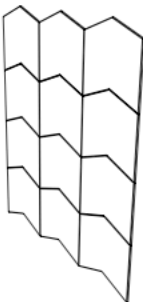
36 Tile Assembly

CHEVRON

10 tiles / set, 2.9m²



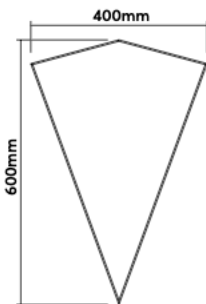
Front View



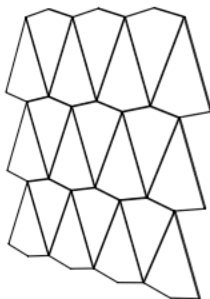
12 Tile Assembly

DIAMOND

20 tiles / set, 2.4m²

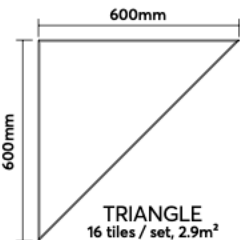


Front View

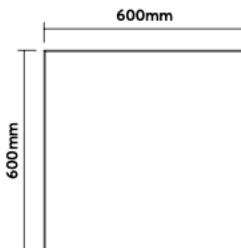


21 Tile Assembly

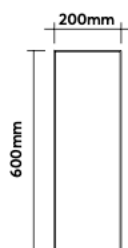
GEOMETRICS



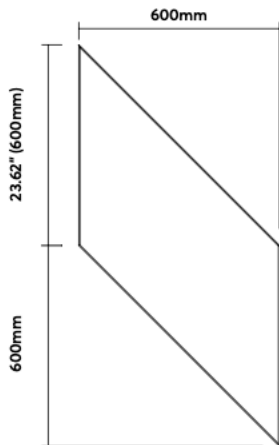
TRIANGLE
16 tiles / set, 2.9m²



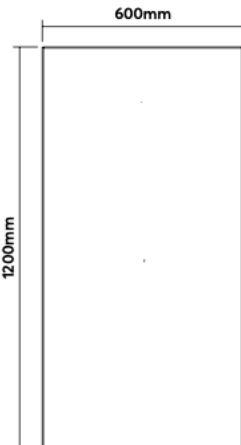
SQUARE
8 tiles / set, 2.9m²



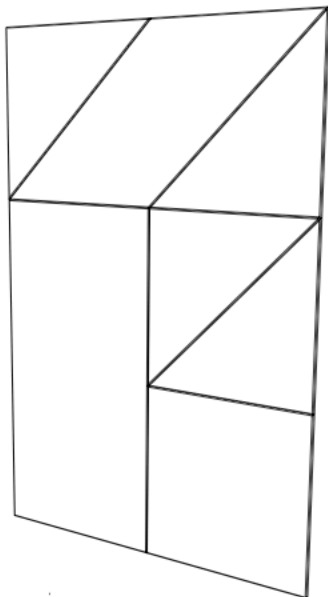
PLANK
26 tiles / set, 3.1m²



PARALLELOGRAM
6 tiles / set, 2.1m²



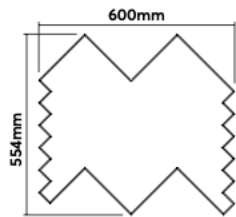
RECTANGLE
4 tiles / set, 2.9m²



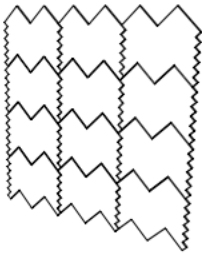
7 Tile Assembly

HERRINGBONE

12 tiles / set, 2.8m²



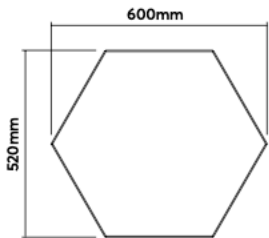
Front View



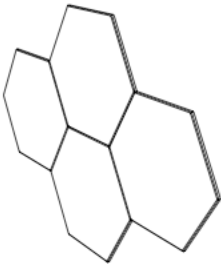
12 Tile Assembly

HEXAGON

10 tiles / set, 2.3m²



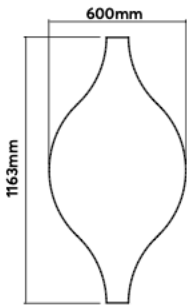
Front View



4 Tile Assembly

HOURLGLASS

5 tiles / set, 2m²



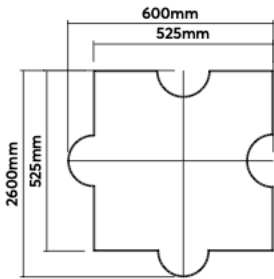
Front View



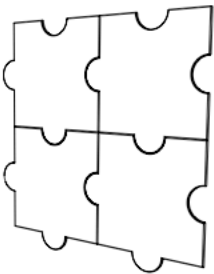
4 Tile Assembly

JIGSAW

8 tiles / set, 2.2m²



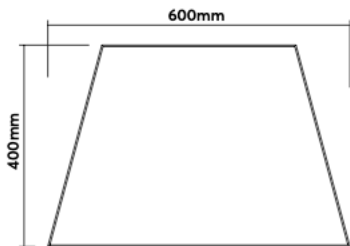
Front View



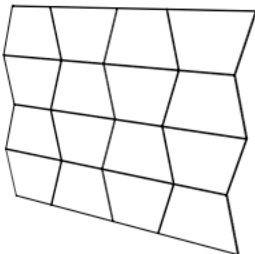
4 Tile Assembly

TRAPEZIUM

15 tiles / set, 3m²



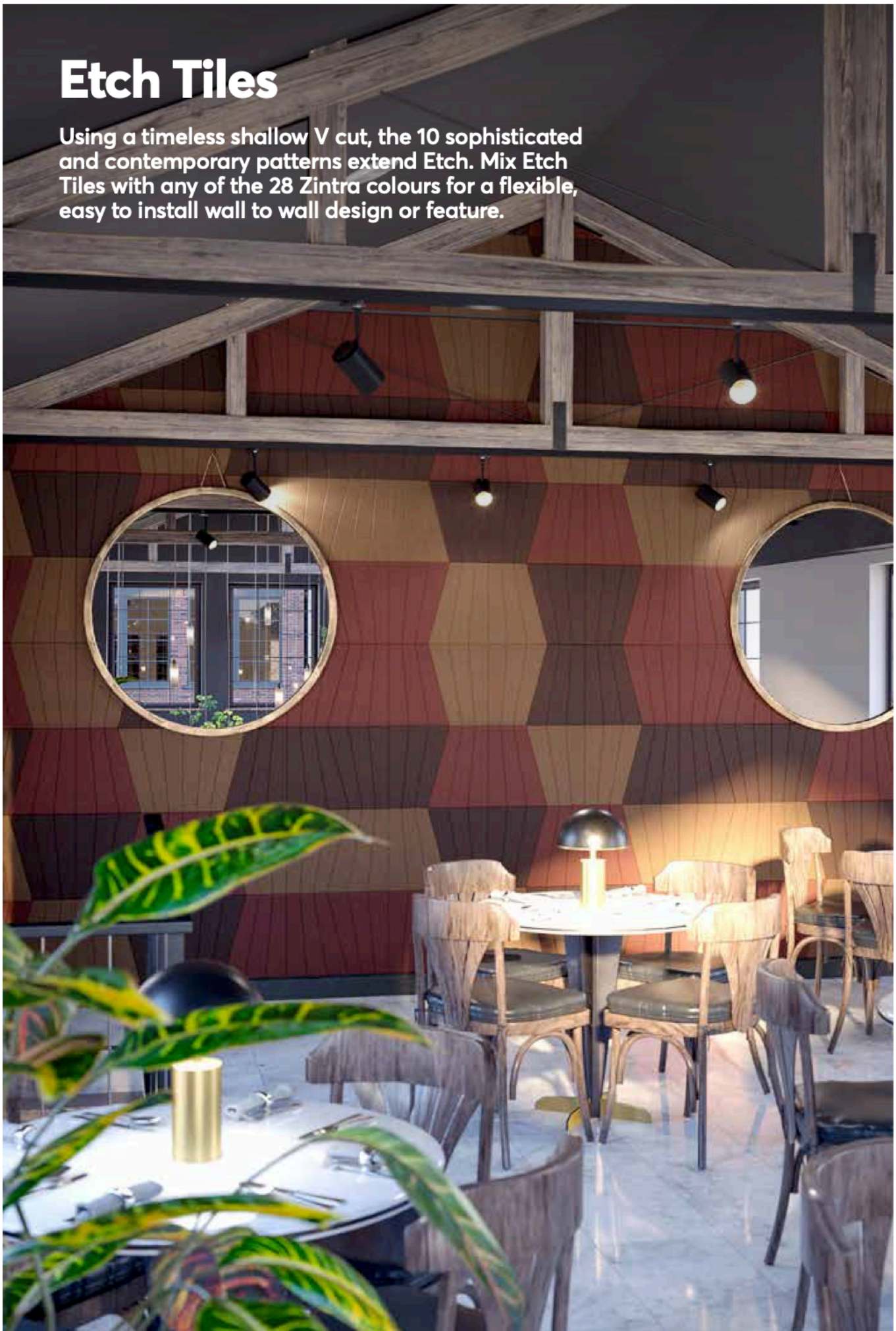
Front View

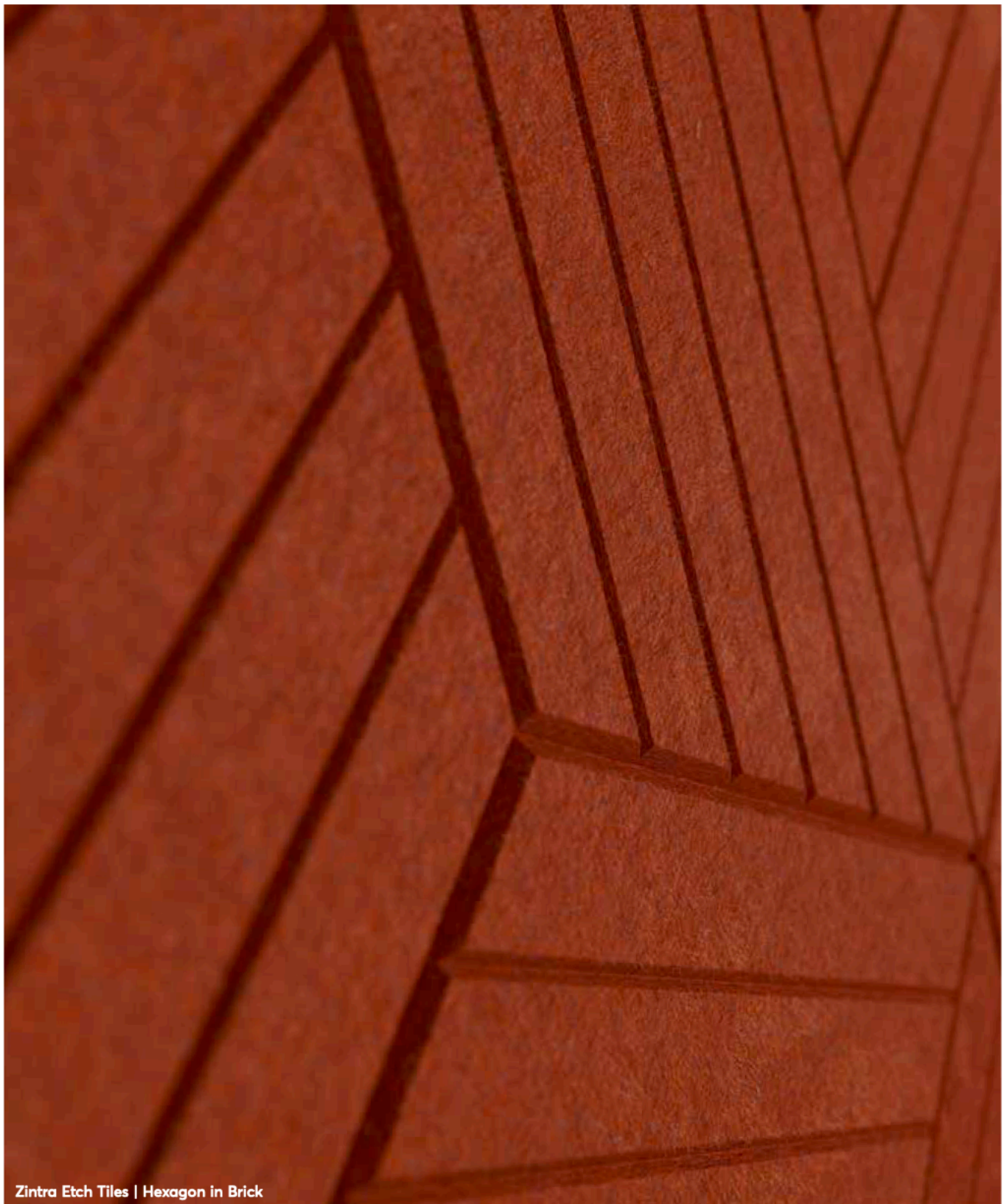


16 Tile Assembly

Etch Tiles

Using a timeless shallow V cut, the 10 sophisticated and contemporary patterns extend Etch. Mix Etch Tiles with any of the 28 Zintra colours for a flexible, easy to install wall to wall design or feature.





Zintra Etch Tiles | Hexagon in Brick

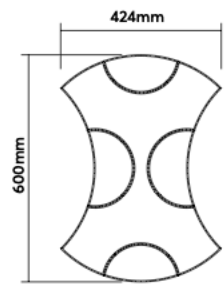
ETCH TILES SPECIFICATIONS

Dimensions:	See pages 44-45
Thickness:	12mm
Colours:	Available in all 28 colours including Timber (See page 6-7)
NRC Rating:	0.45 – 0.90 (See pages 4-5)
Aw Rating:	0.30 – 0.95 (See pages 4-5)
Notes:	Custom sizes available Designed to coordinate with Plain Tiles available in the full Zintra Range

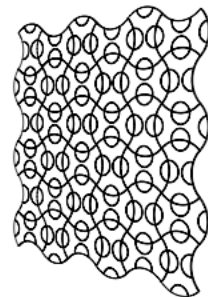


BATTLEAXE

13 tiles / set, 2.3m²



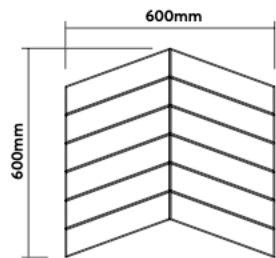
Front View



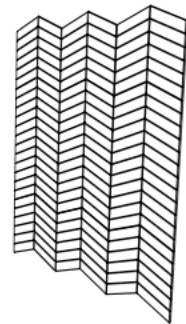
36 Tile Assembly

CHEVRON

10 tiles / set, 2.9m²



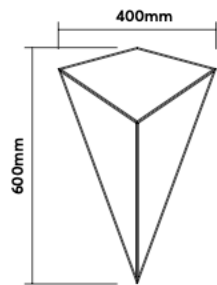
Front View



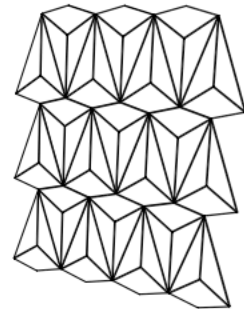
12 Tile Assembly

DIAMOND

20 tiles / set, 2.4m²



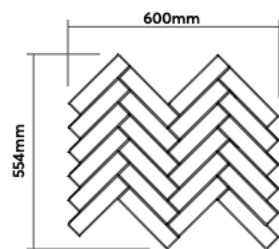
Front View



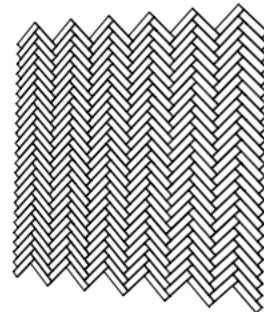
21 Tile Assembly

HERRINGBONE

12 tiles / set, 2.8m²



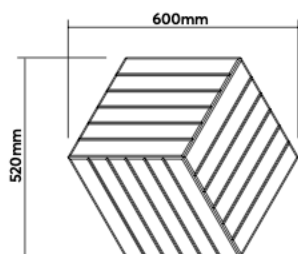
Front View



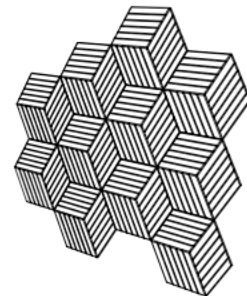
12 Tile Assembly

HEXAGON

10 tiles / set, 2.3m²



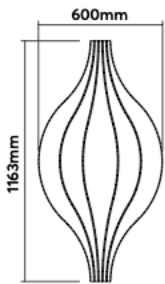
Front View



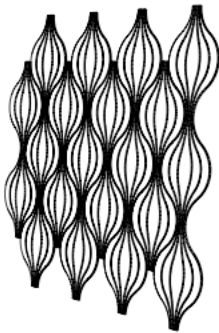
10 Tile Assembly

HOURLGLASS

5 tiles / set, 2m²



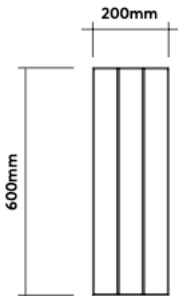
Front View



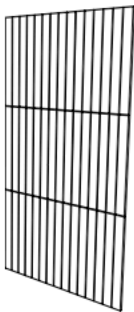
20 Tile Assembly

PLANK

26 tiles / set, 3.1m²



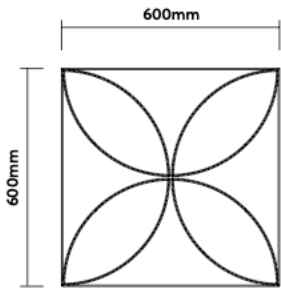
Front View



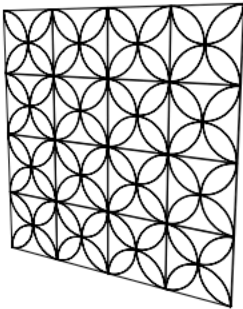
15 Tile Assembly

SQUARE

8 tiles / set, 2.9m²



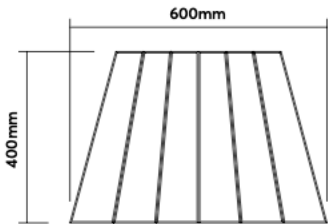
Front View



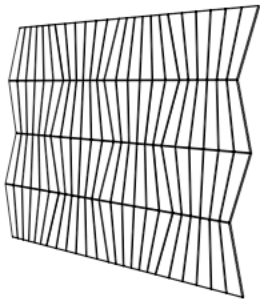
16 Tile Assembly

TRAPEZIUM

15 tiles / set, 2.9m²



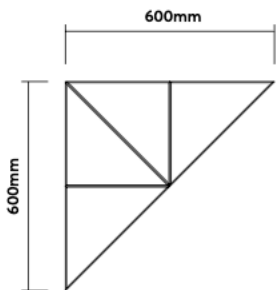
Front View



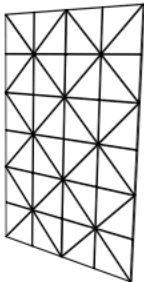
16 Tile Assembly

TRIANGLE

16 tiles / set, 2.3m²



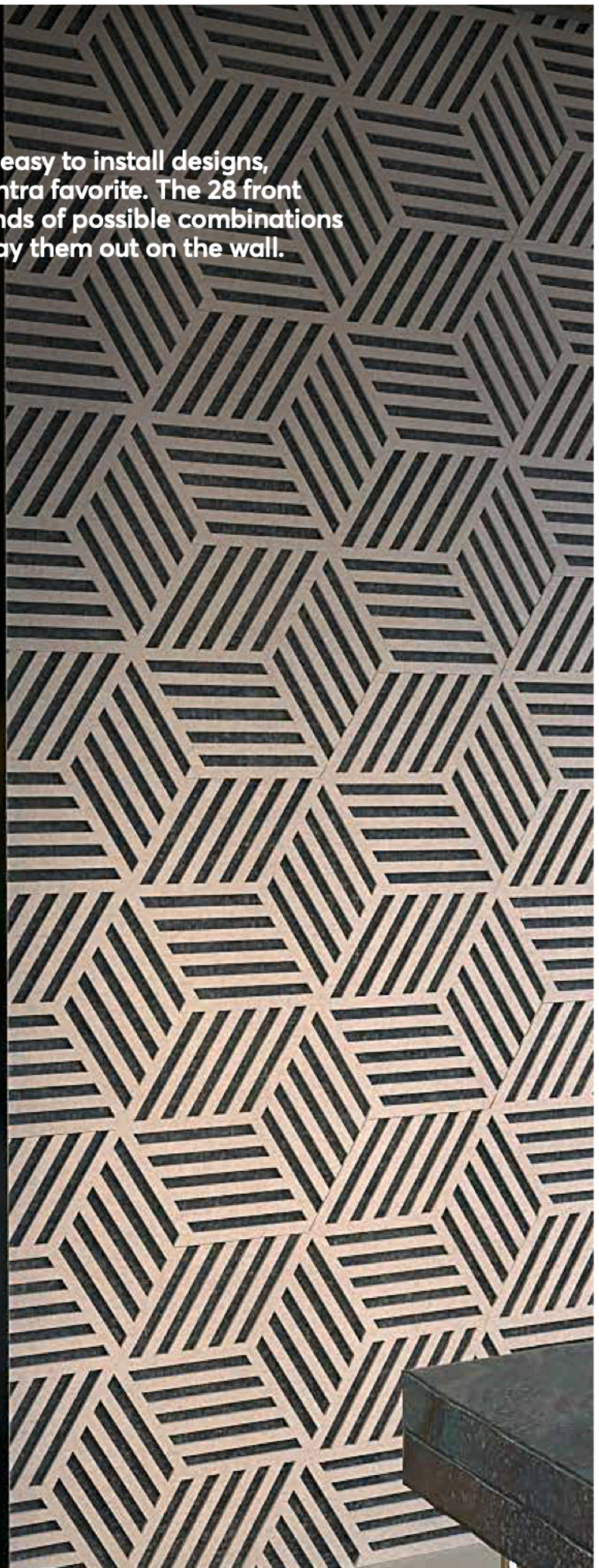
Front View

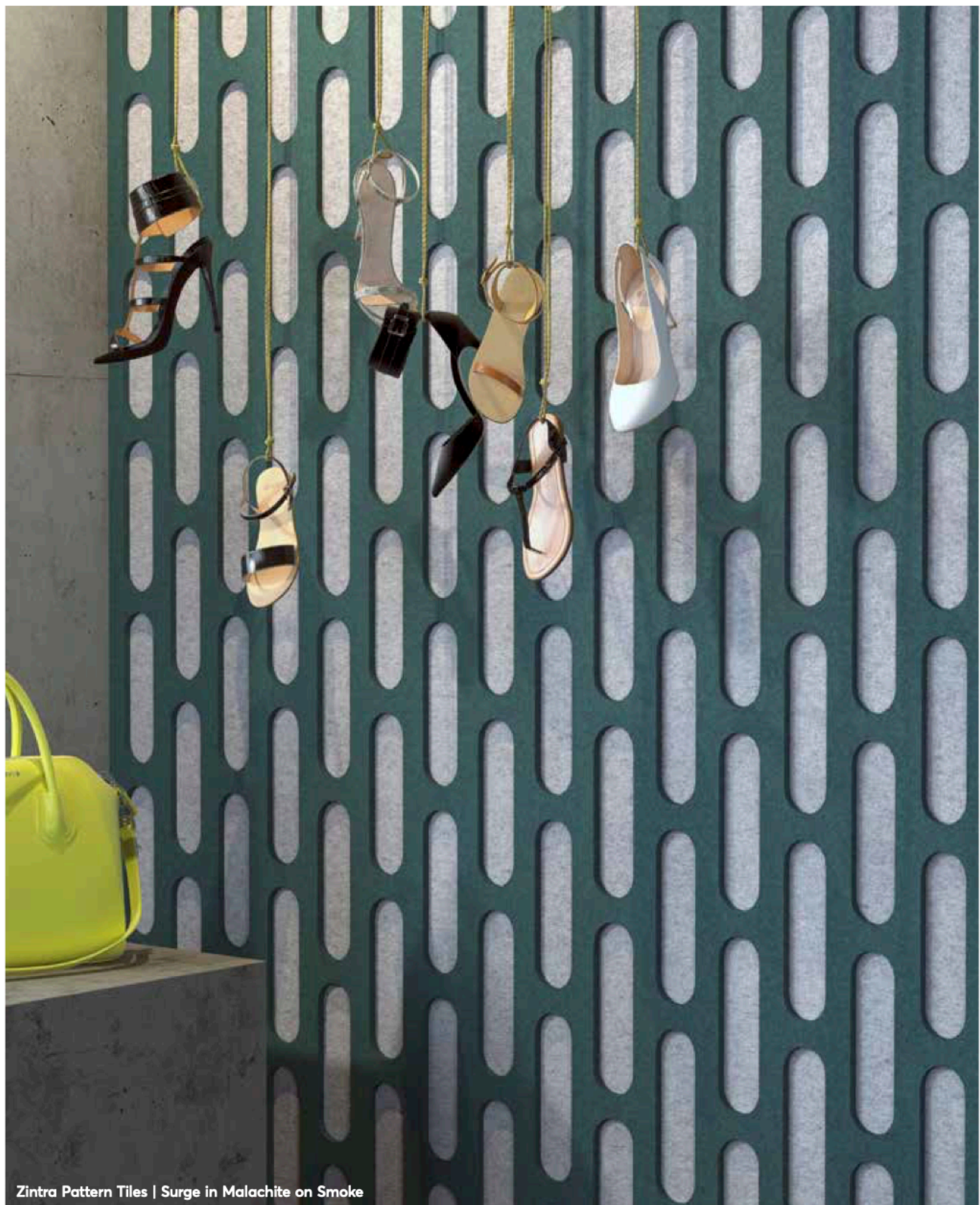


12 Tile Assembly

Pattern Tiles

Offering 6 new, progressive and easy to install designs, Pattern Tiles continue to be a Zintra favorite. The 28 front and back colours create thousands of possible combinations even before you decide how to lay them out on the wall.





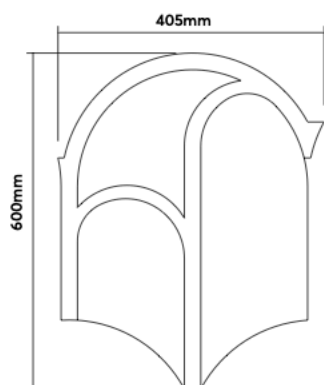
PATTERN TILES SPECIFICATIONS

Dimensions:	See pages 48-49
Thickness:	24mm
Colours:	Available in all 28 colours including Timber (See page 6-7)
NRC Rating:	0.45 – 0.90 (See pages 4-5)
Aw Rating:	0.30 – 0.95 (See pages 4-5)
Notes:	Custom sizes available

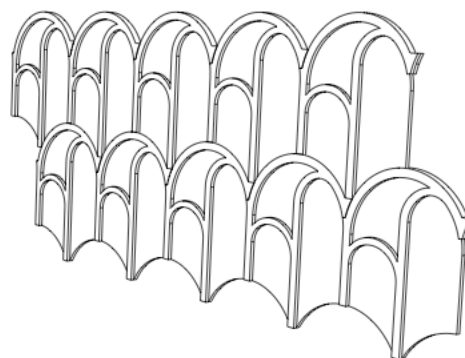


ARCH

16 tiles / set, 2.4m²



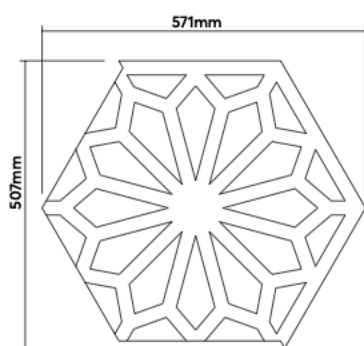
Front View



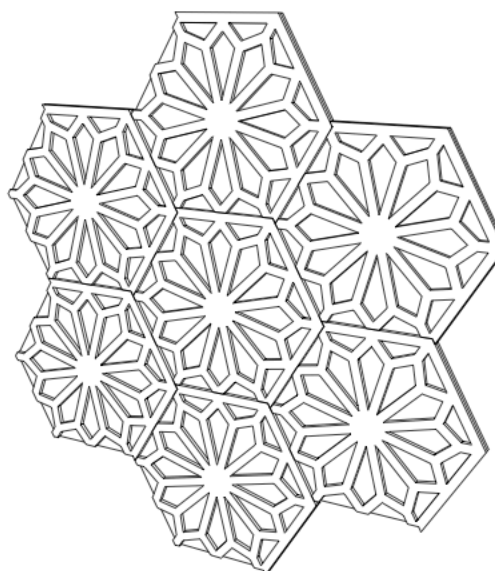
6 Tile Assembly

ENTWINE

10 tiles / set, 2.1m²



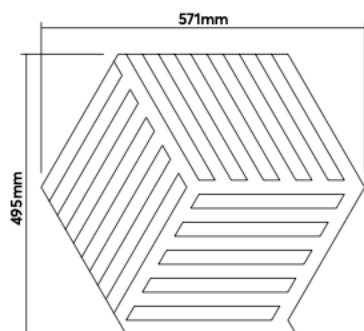
Front View



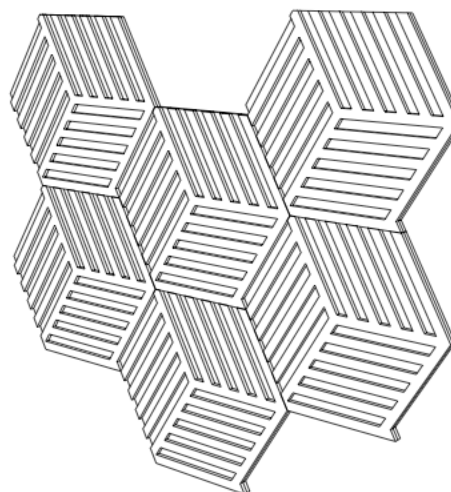
7 Tile Assembly

LEAP

10 tiles / set, 2.1m²



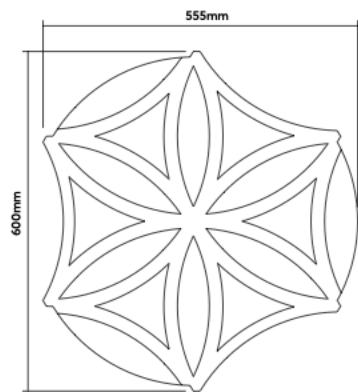
Front View



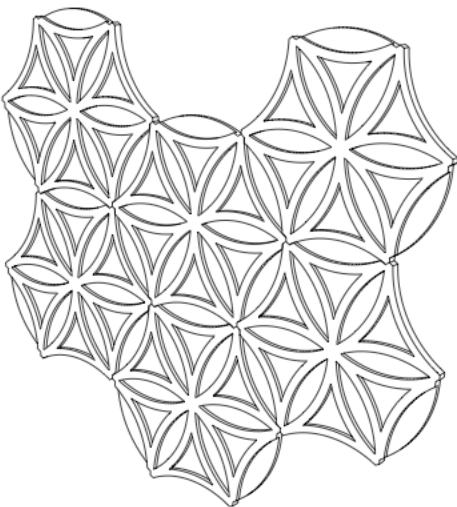
6 Tile Assembly

LOTUS

10 tiles / set, 2.3m²



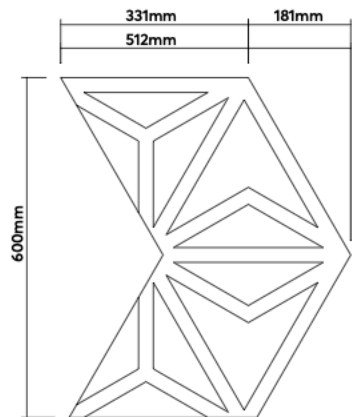
Front View



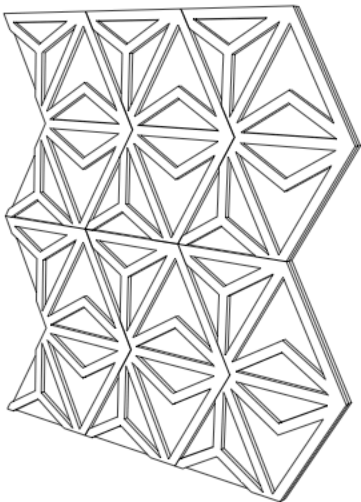
6 Tile Assembly

STRIAE

14 tiles / set, 2.8m²



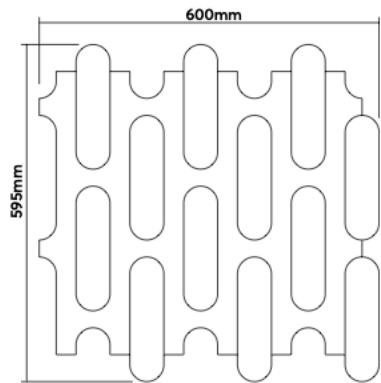
Front View



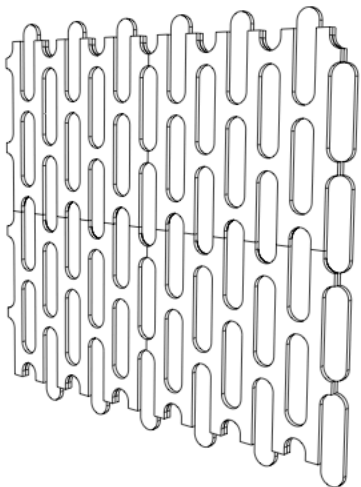
10 Tile Assembly

SURGE

8 tiles / set, 2.3m²



Front View



4 Tile Assembly

zintra®

DUO DESIGN

+507 6491-1805

PANAMA-MEXICO-HONDURAS-GUATEMALA-ECUADOR



baresque

53-55 whiting street

artarmon nsw 2064

e. info@baresque.com.au

p. 1300 306 399

www.baresque.com.au